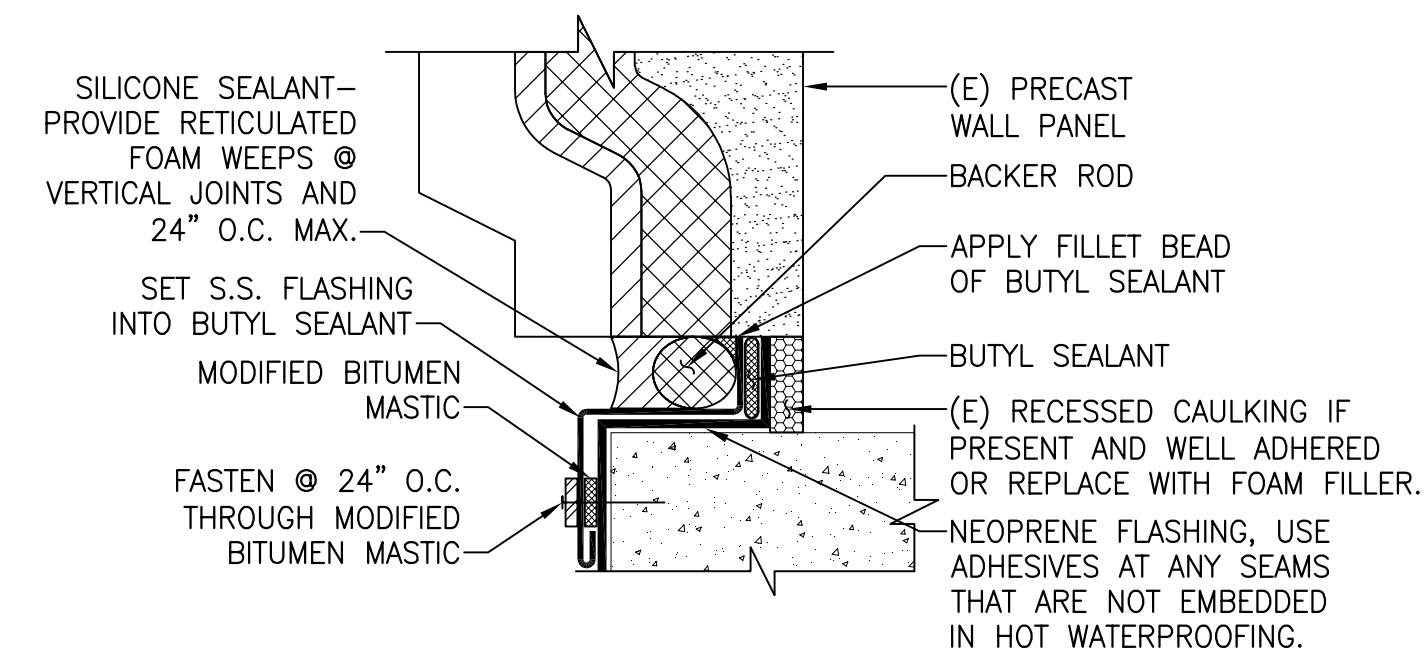
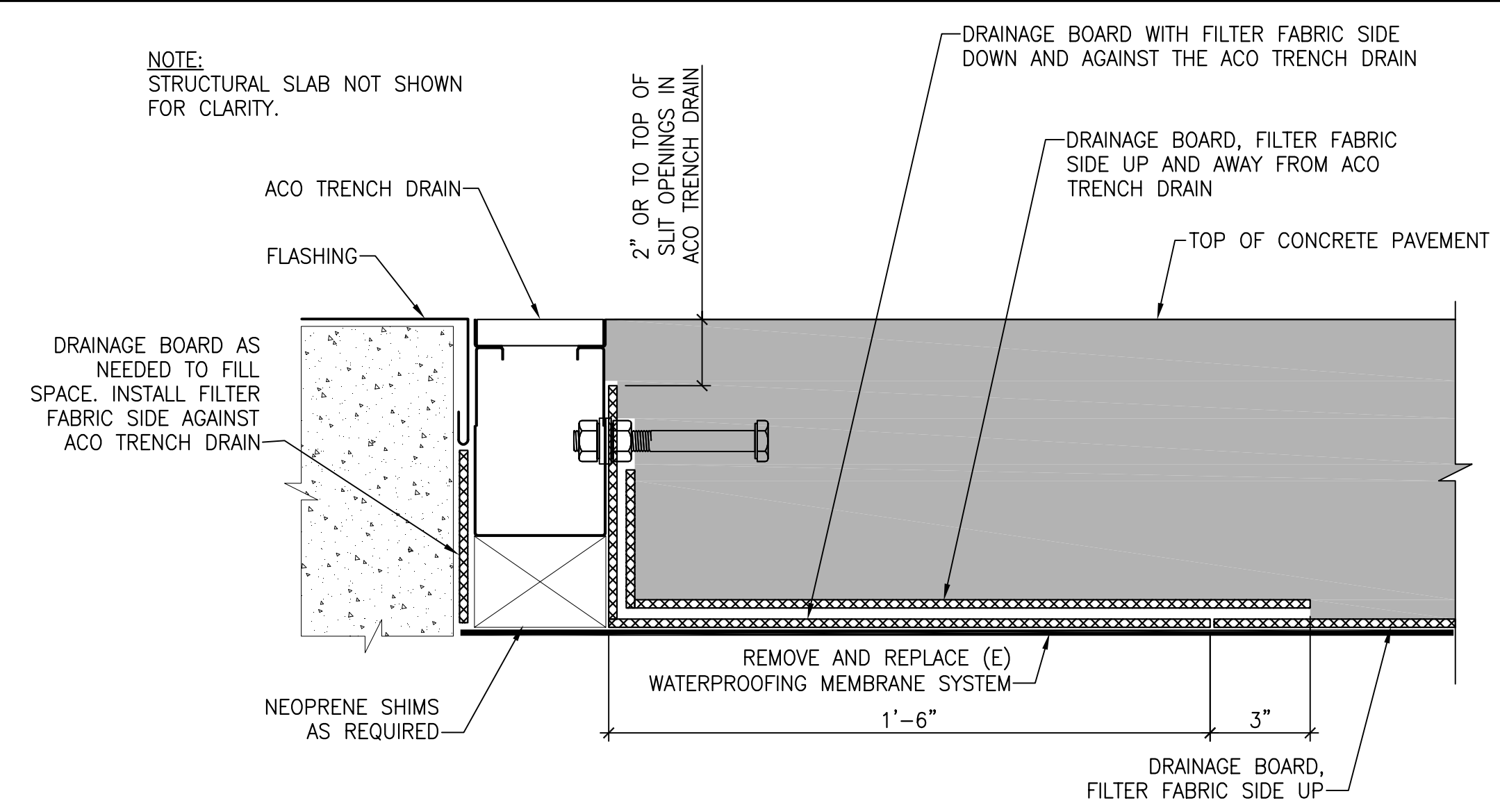


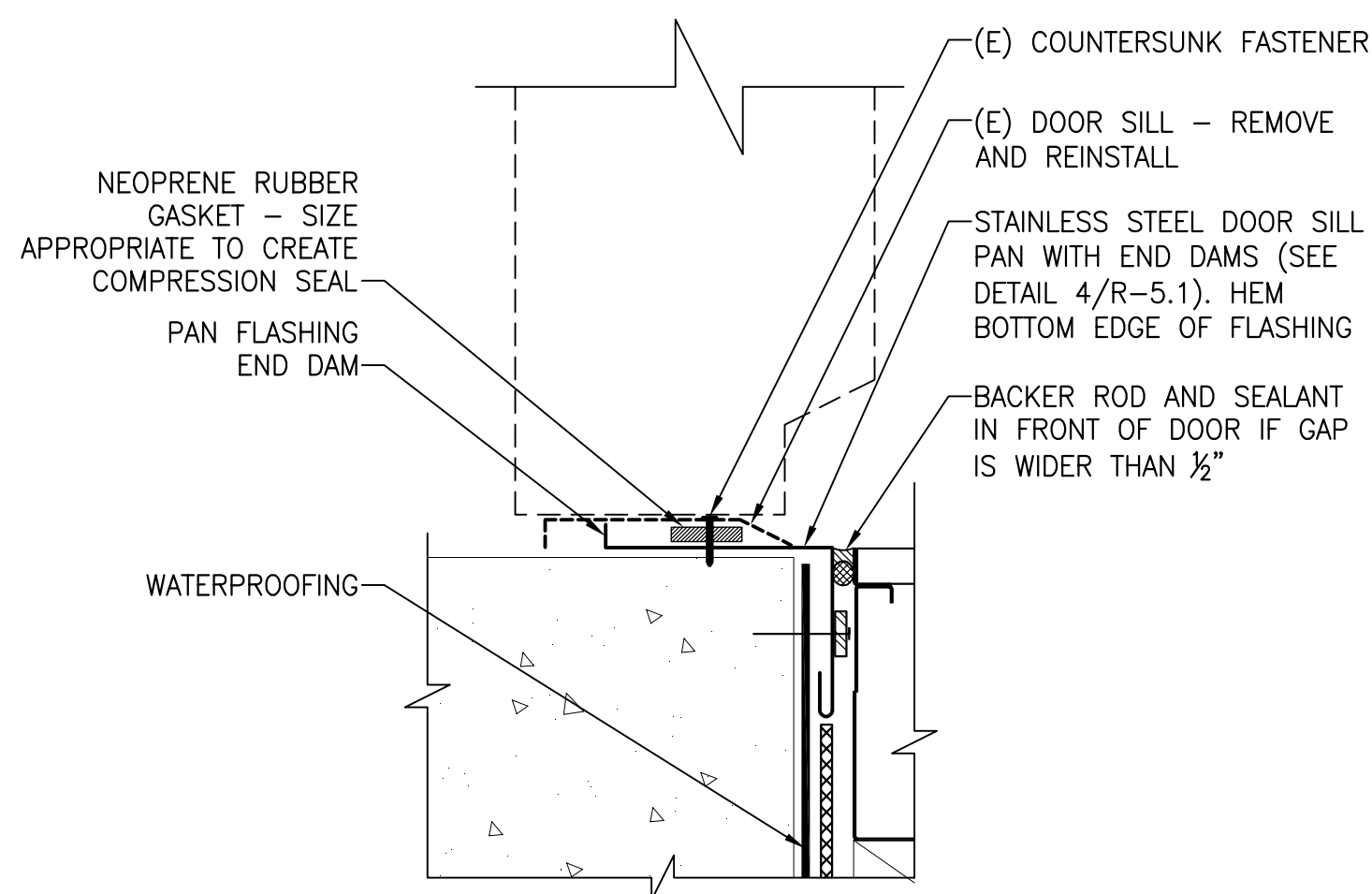
**1 SECTION AT PRECAST PANEL WALL**  
 R-5.1 1-1/2" = 1'-0"



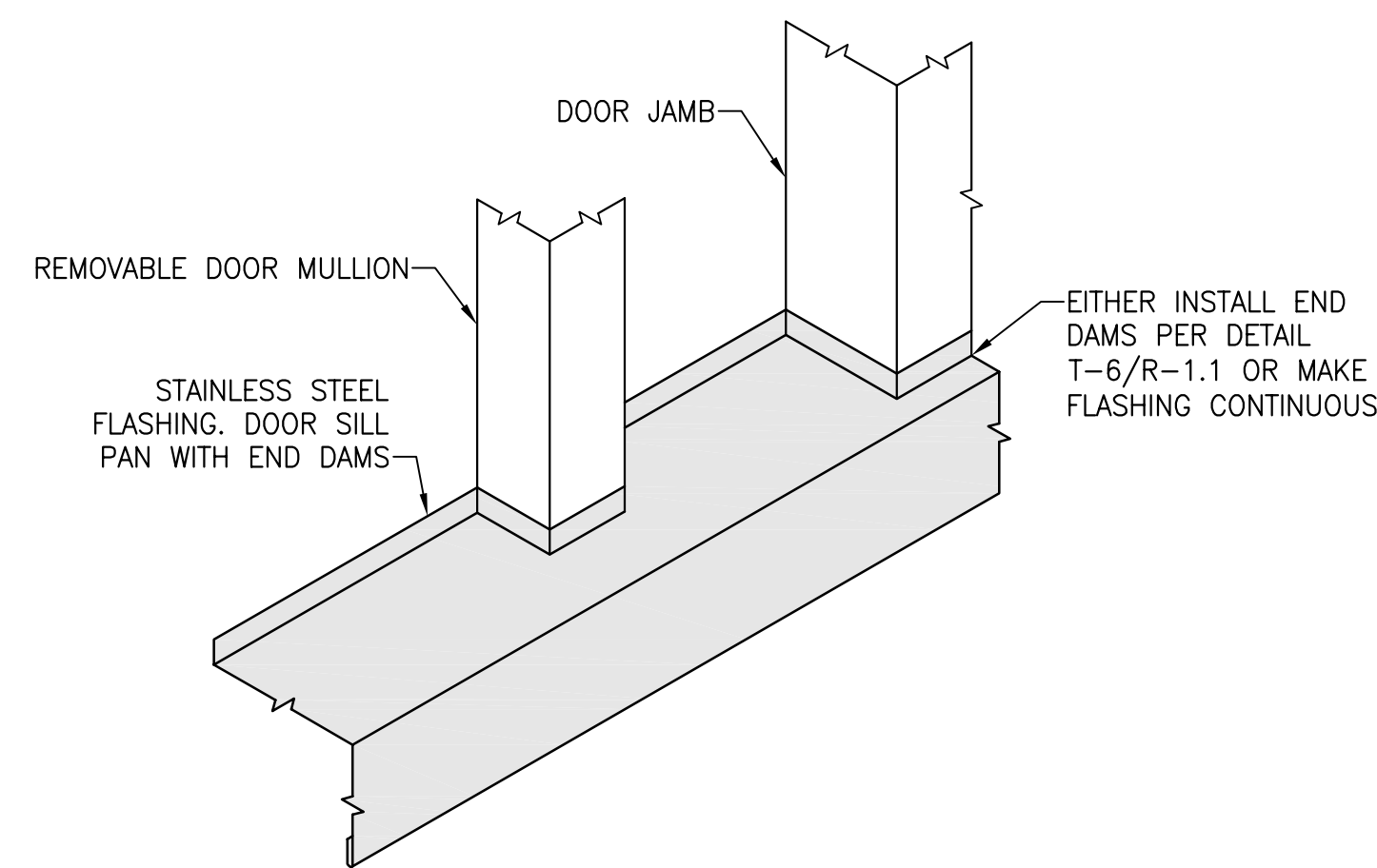
**A DETAIL AT WALL BASE**  
 R-5.1 3" = 1'-0"



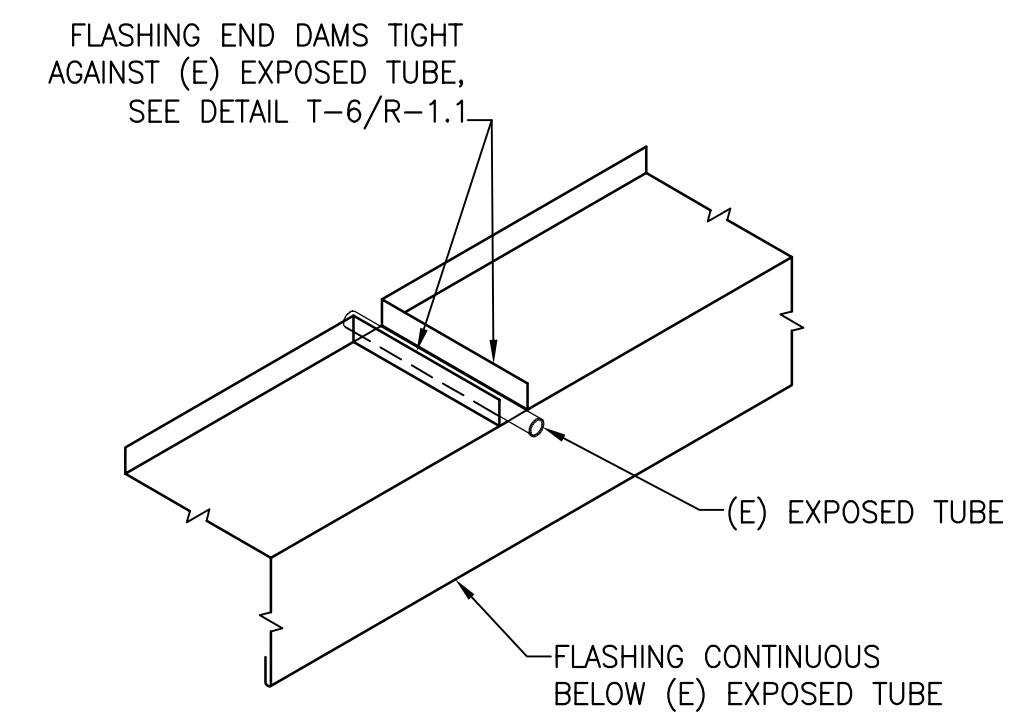
**2 SECTION - DRAINAGE BOARD PLACEMENT AGAINST ACO DRAIN**  
 R-5.1 3" = 1'-0"



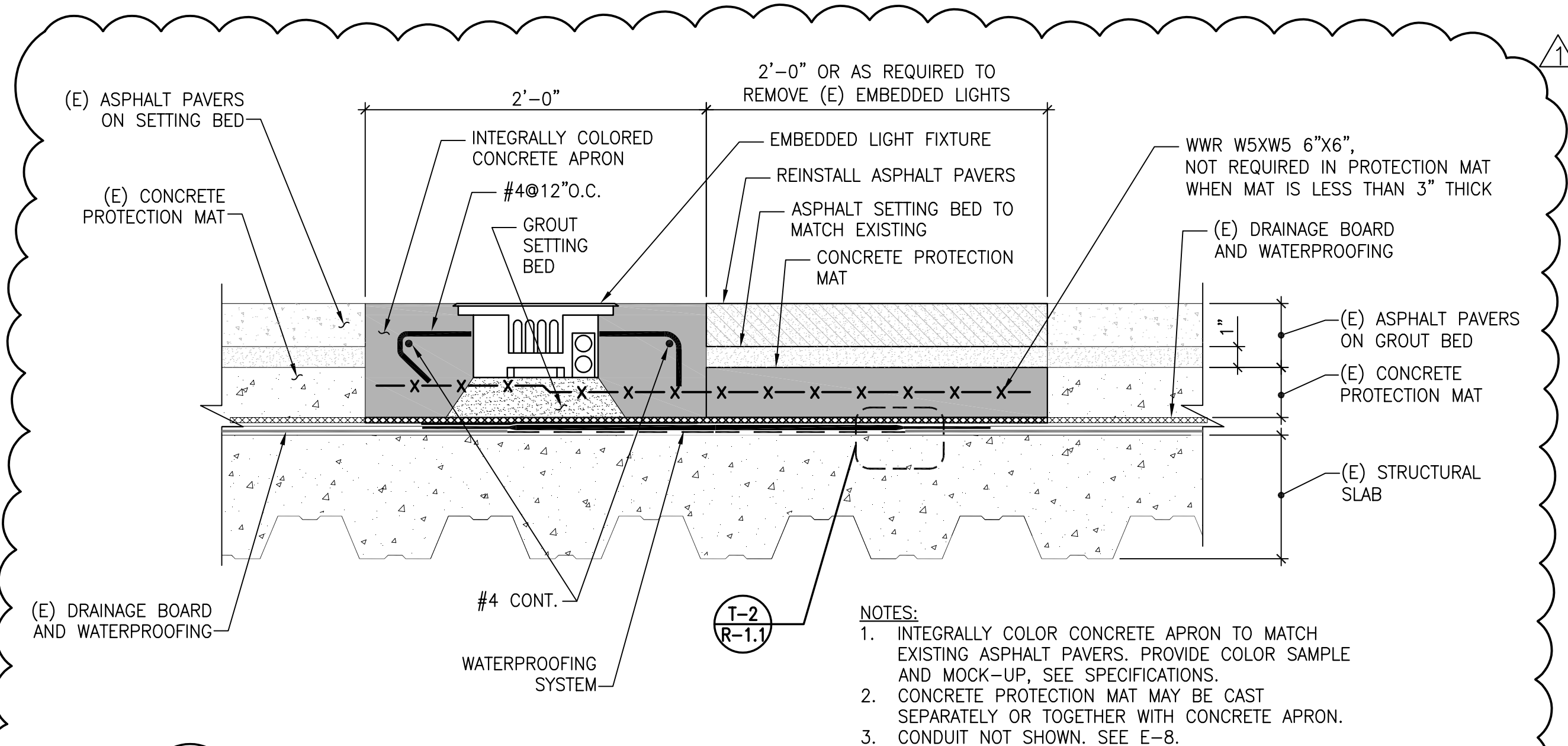
**3 SECTION AT DOOR SILL**  
 R-5.1 3" = 1'-0"



**4 DOOR SILL PAN FLASHING**  
 R-5.1 N.T.S.

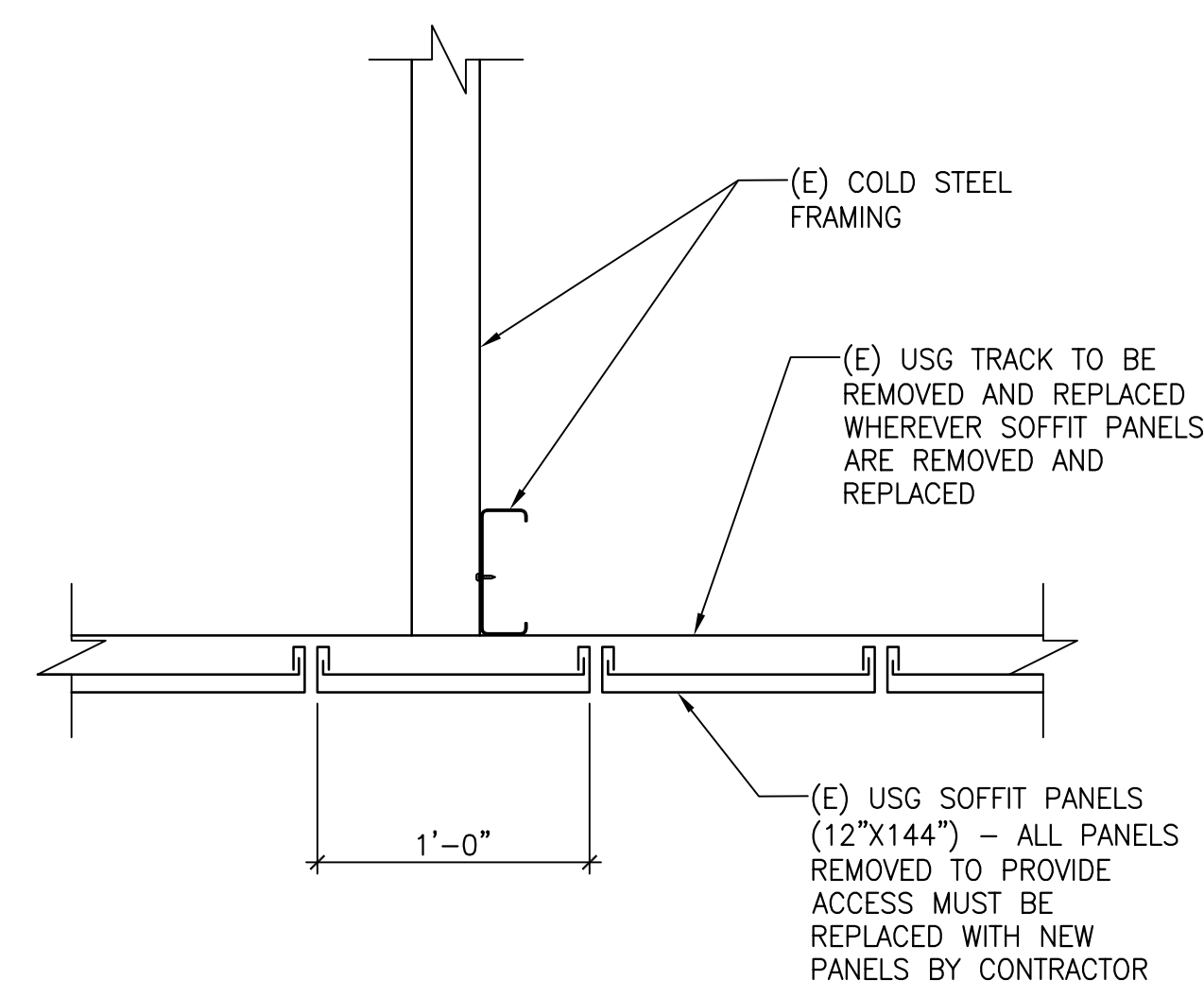


**5 DETAIL AT MISCELLANEOUS WEEP**  
 R-5.1 N.T.S.



**6 SECTION AT EMBEDDED LIGHTING**  
 R-5.1 1-1/2" = 1'-0"

- NOTES:**
1. INTEGRALLY COLOR CONCRETE APRON TO MATCH EXISTING ASPHALT PAVERS. PROVIDE COLOR SAMPLE AND MOCK-UP, SEE SPECIFICATIONS.
  2. CONCRETE PROTECTION MAT MAY BE CAST SEPARATELY OR TOGETHER WITH CONCRETE APRON.
  3. CONDUIT NOT SHOWN. SEE E-8.



**7 TYPE C CEILING PANEL**  
 R-5.1 1-1/2" = 1'-0"

Consultant

No.	Date	Description	By
0	05/24/10	ADDENDUM 1	JAG
0	04/26/10	ISSUED FOR BID	JAG

**WATERPROOFING, DRAINAGE, AND LIGHTING IMPROVEMENTS OF LEVEL 1 STAIR TOWERS**  
**BOSTON CONVENTION & EXHIBITION CENTER**  
**BOSTON, MASSACHUSETTS**  
 Project

**STAIR TOWER DETAILS (2 OF 5)**

Drawing Title

Project No.	Checked	Date
100086.00	JAG	04/26/10
Drawn	Approved	Scale
WTB	SJC	AS NOTED

Drawing No.

**R-5.1**

Seal